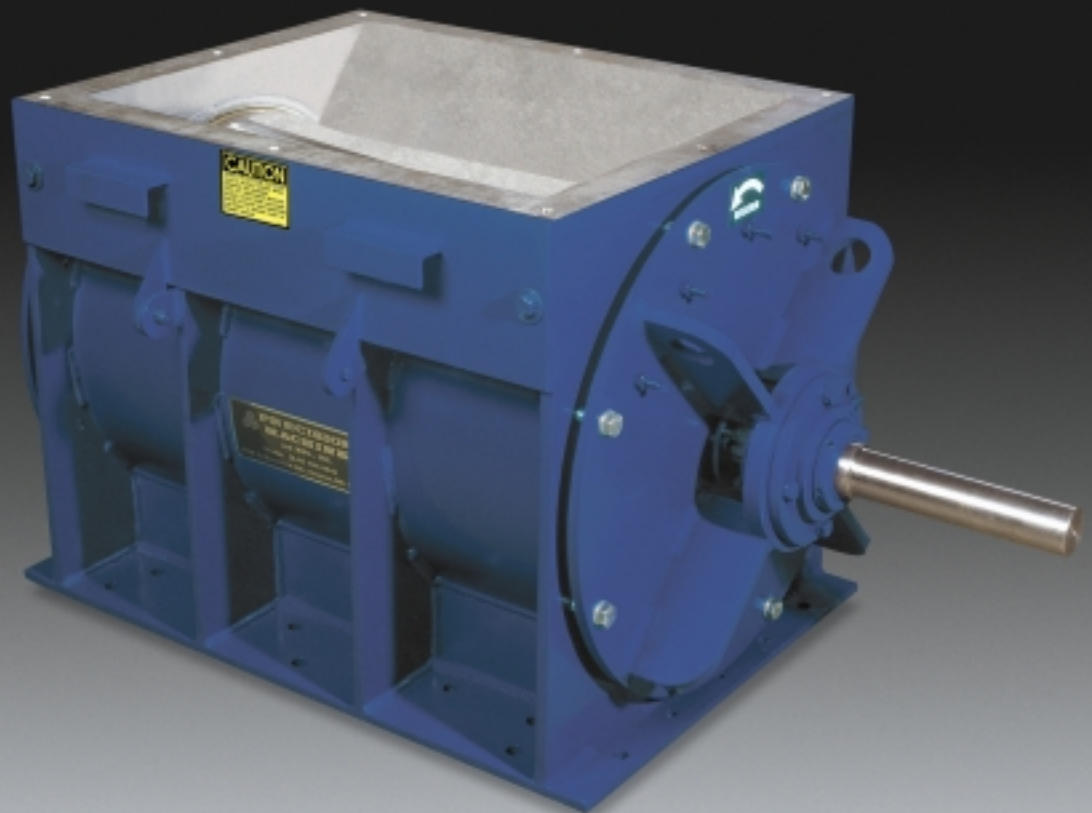
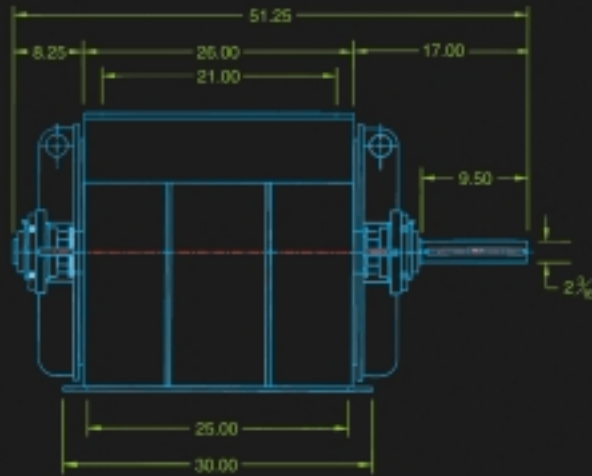




Precision Rotary Feeder

*Precise
Durable
Flexible*

*Quality
craftsmanship
that's the best
in its class!*



Precision Rotary Feeder

For more than 20 years, Precision Machine & Manufacturing, Inc., has produced the finest Rotary Feeders available. Precise engineering, durable construction and the highest quality materials insure that each Precision Feeder we build is the best in its class.

Our customers use Rotary Feeders in an infinite range of applications, so we build Precision Feeders in a wide variety of sizes and for a multitude of particular needs. Should you have a special material or size requirement, our engineering department will design a feeder to your exact specifications. No matter which Precision Feeder you choose, you'll receive the finest, most reliable piece of equipment available.

Hard-chromed Barrel

For less friction and a longer life

Rotor and Barrel

Machined to application tolerances

Removable, Replaceable Drive Shaft

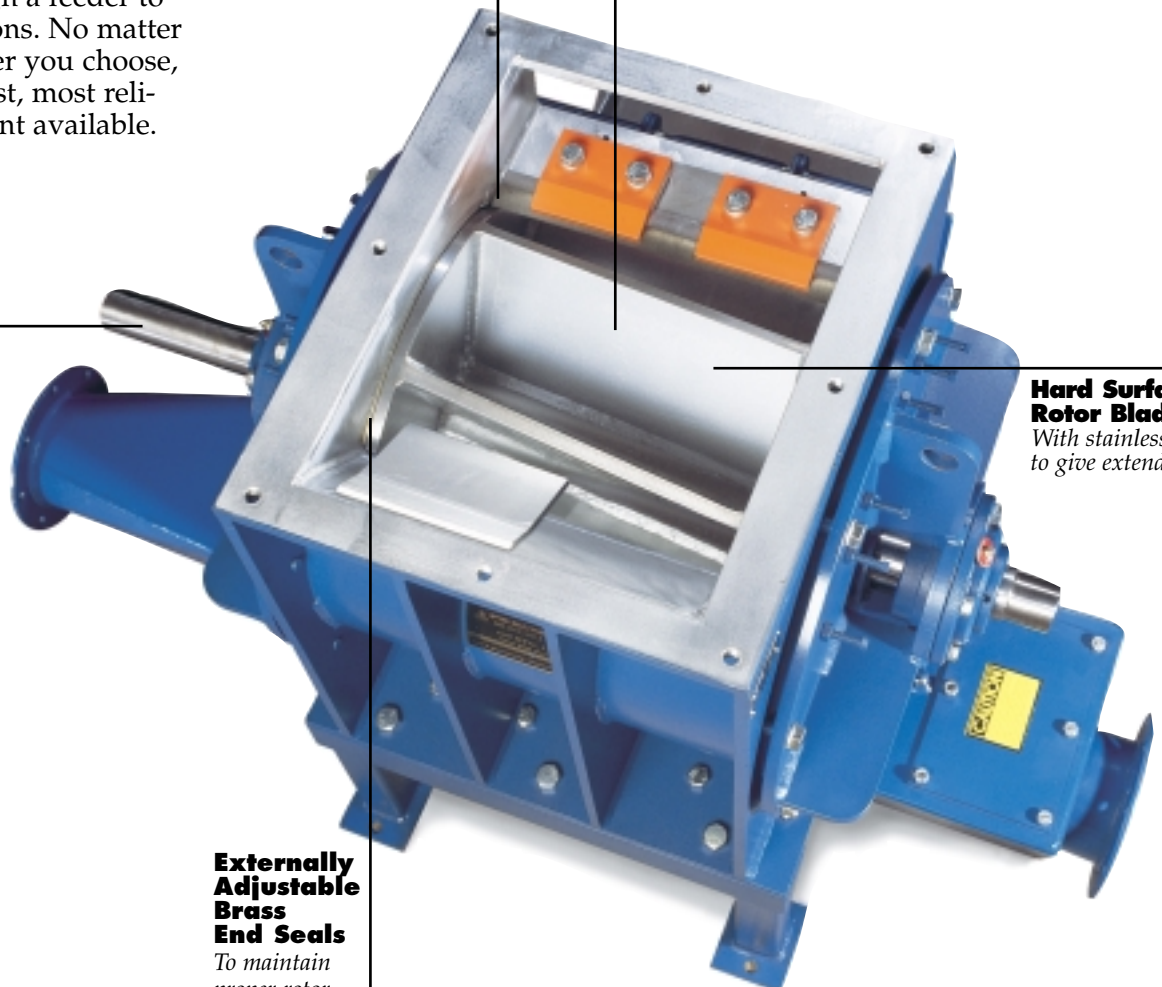
Machined from stressproof steel for added strength

Hard Surfaced Rotor Blades

With stainless steel to give extended life

Externally Adjustable Brass End Seals

To maintain proper rotor end clearance





Sealed Door

For easy access to the top shear knife

Adjustable Top Shear Knife and Bottom Wiper Knife

To maintain proper clearances

Shaft Seal Packing Glands

To protect bearings

Outboard Tapered Roller Bearings

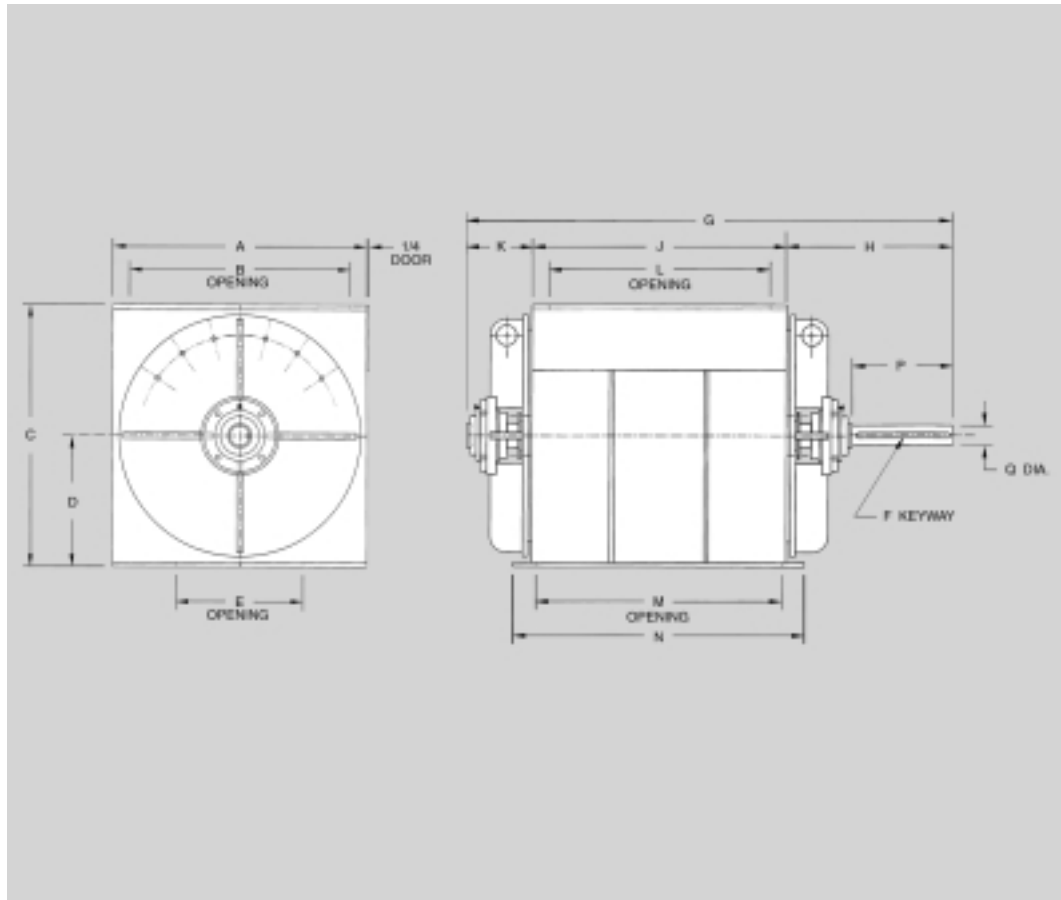
For higher load ratings and to insure proper shaft alignment



Precision Rotary Feeder

The Precision Rotary Feeder is a full-featured rotary valve. It is a completely fabricated unit, built for extreme durability, using the finest quality materials throughout.

The Rotary Feeder is designed to enable a positive shearing action to handle "overs" and unscreened material. A hardened steel knife at the infeed opening shears "overs" and cleans the rotor blades to protect the housing from abrasion. A similar knife at the discharge opening cleans the rotor blades after material has been emptied from each rotor pocket.



Note: Mounting dimensions available upon request from our engineering department.

DIMENSIONS

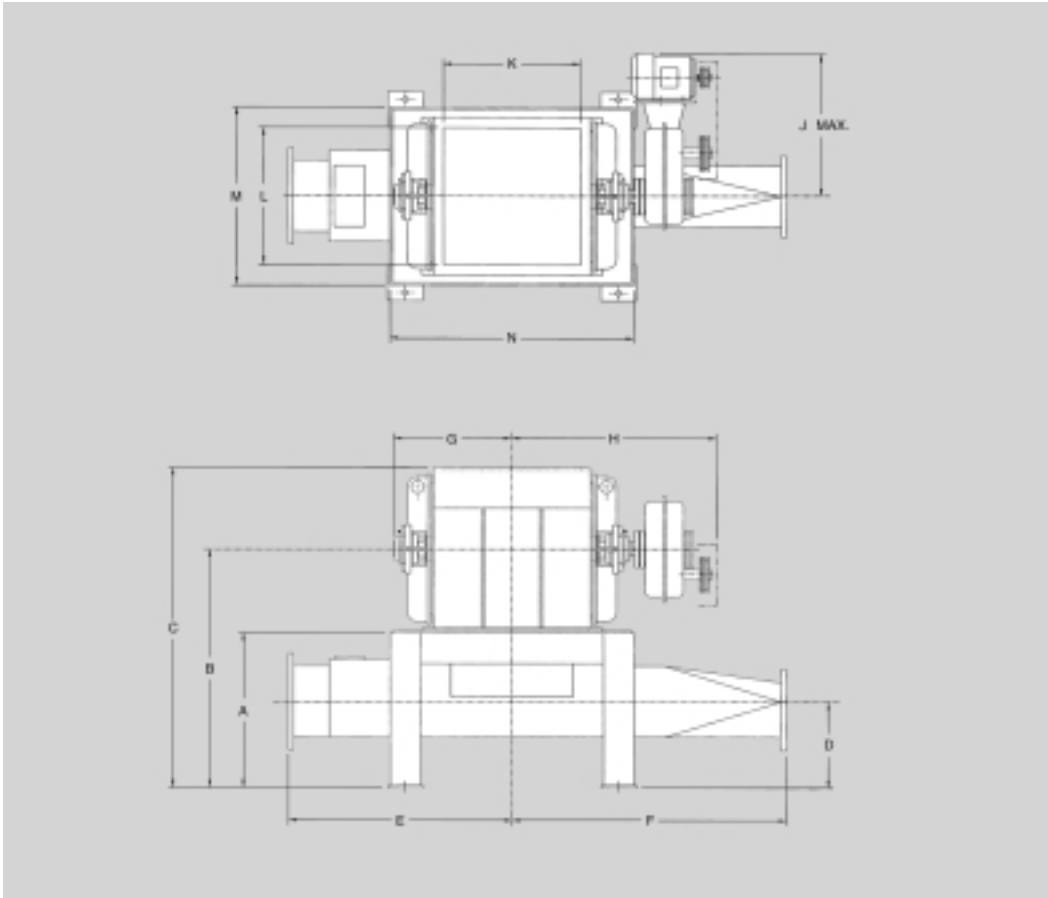
SIZE	A	B	C	D	E	F	G	H	J	K	L	M	N	P	Q
14x18	18.00	15.00	18.00	9.00	9.00	1/2x1/4x7 1/2	44.00	15.56	19.25	9.19	15.00	18.00	22.00	8.38	1 1/16
16x20	20.00	16.00	21.00	10.50	10.00	1/2x1/4x9	46.00	17.25	21.00	7.75	16.50	20.00	24.00	9.25	1 1/16
20x20	25.00	21.00	26.00	13.00	10.00	1/2x1/4x9	47.00	16.75	21.00	9.25	16.00	20.00	25.00	9.25	2 3/16
20x25	25.00	21.00	26.00	13.00	13.00	1/2x1/4x9 1/4	51.25	17.00	26.00	8.25	21.00	25.00	30.00	9.50	2 3/16
20x30	25.00	21.00	26.00	13.00	13.00	1/2x1/4x9 1/2	56.50	17.25	31.00	8.25	26.00	30.00	35.50	9.75	2 3/16
25x30	31.00	27.00	32.00	16.00	15.50	5/8x5/16x11 3/4	59.00	20.25	31.00	7.75	27.00	30.00	35.50	12.25	2 7/16
25x35	31.00	27.00	32.00	16.00	15.50	5/8x5/16x11 3/4	64.00	20.25	36.00	7.75	31.00	35.00	40.50	12.25	2 7/16
30x30	38.00	34.00	38.00	19.00	20.00	3/4x3/8x11 3/4	61.00	21.25	31.00	8.75	26.00	30.00	38.00	12.00	2 5/16
30x35	38.00	34.00	38.00	19.00	20.00	3/4x3/8x11 3/4	66.00	21.25	36.00	8.75	31.00	35.00	43.00	12.00	2 5/16
30x40	38.00	34.00	38.00	19.00	18.00	3/4x3/8x11 1/2	72.50	21.00	41.00	10.50	35.00	40.00	47.00	13.00	2 5/16
30x45	38.00	34.00	38.00	19.00	18.00	7/8x7/16x11 1/2	77.50	21.00	46.00	10.50	40.00	45.00	52.00	-----	3 7/16
35x45	44.00	36.00	44.00	22.00	22.75	1x1/2x13	85.00	23.50	49.00	12.50	41.75	47.75	55.25	-----	3 5/16
35x50	44.00	36.00	44.00	22.00	22.75	1x1/2x13	90.00	23.50	54.00	12.50	47.00	52.75	60.75	-----	3 5/16
35x55	44.00	36.00	44.00	22.00	22.75	1x1/2x13	95.00	23.50	58.00	12.50	52.00	57.75	65.75	-----	3 5/16
45x45	56.00	46.00	56.00	28.00	30.00	1 1/4x5/8x15 1/8	98.00	28.00	55.00	15.00	42.00	47.00	55.00	-----	4 5/16
45x50	56.00	46.00	56.00	28.00	30.00	1 1/4x5/8x15 1/8	103.00	28.00	60.00	15.00	47.00	52.00	60.00	-----	4 5/16
45x55	56.00	46.00	56.00	28.00	30.00	1 1/4x5/8x15 1/8	108.00	28.00	65.00	15.00	52.00	52.00	65.00	-----	4 5/16

Rotary Feeder with Injector Tee



The Precision Rotary Feeder can be furnished with an injector tee and mounting stand for pneumatically conveyed applications.

The injector tee has a bolt-on side door for easy access to the Rotary Feeder bottom knife. There is also a top bolt-on door for access to the check valve, which is used to adjust air flow through the injector tee.



Note: Mounting dimensions available upon request from our engineering department.

DIMENSIONS

SIZE	A	B	C	D	E	F	G	H	J	K	L	M	N
14x18	23	32	41	12	31	40	19	32	29	15	15	20	34
16x20	23	34	44	12	33	45	19	34	29	16	16	22	36
20x20	37	50	63	18	36	57	20	34	27	16	21	28	37
20x25	37	50	63	18	38	60	22	36	27	21	20	28	42
20x30	37	50	63	18	41	62	24	39	27	26	20	28	47
25x30	37	53	69	18	44	66	24	42	30	27	27	34	47
25x35	37	53	69	18	46	69	26	45	30	31	27	34	52
30x30	47	66	85	24	48	77	25	43	32	26	34	40	47
30x35	47	66	85	24	50	80	27	46	32	31	34	40	52
30x40	47	66	85	24	53	82	31	48	36	35	34	40	57
30x45	47	66	85	24	55	85	34	50	36	40	34	40	62
35x45	54	76	98	24	63	98	37	54	40	42	36	45	69
35x50	54	76	98	24	66	100	40	57	40	47	36	45	74
35x55	54	76	98	24	68	103	42	59	40	52	36	45	79

Note: Dimensions shown are for the maximum line size.



Capacities

The Precision Rotary Feeder is available in many sizes that cover a wide range of capacities. Contact your local sales representative or our sales department to discuss your specific application to ensure proper sizing of your Precision Rotary Feeder.

Precision Rotary Feeders Feature

Durability

- Shaft seal packing glands to protect the bearings
- Outboard tapered roller bearings for higher load ratings and to insure proper shaft alignment
- Rotor blades are hard surfaced with stainless steel to give extended life, and are machined

Flexibility

- Adjustable top shear knife and bottom wiper knife to maintain proper clearances
- Sealed door for easy access to the top shear knife
- Externally adjustable brass end seals to maintain proper rotor end seals to maintain proper rotor end clearance

Quality Craftsmanship

- Rotor and barrel machined to application tolerances
- A hard chromed barrel for less friction and longer life
- A removeable, replaceable drive shaft machined from stressproof steel for added strength

STANDARD PRECISION ROTARY FEEDERS (OTHER SIZES AVAILABLE UPON REQUEST)

Model	CFR	Max. Recom. RPM	Length	Height	Width	Recommended Capacities in UPH (Units/Hour)			Estimated Weight (lbs.)
						Screened Chips Sawdust Bark or Shavings	Unscreened Chips Hammer, Hog Bark, Scr. Hog Fuel	Unscreen Knife Hog Fuel	
PMR 14X18	.93	45	19.25	18	18	5.0	–	–	500
PMR 16x20	1.46	45	21	21	20	8.0	–	–	800
PMR 20X20	2.19	42	21	26	25	14.25	10.2	–	1300
PMR 20X25	2.93	42	26	26	25	19.25	13.7	–	1450
PMR 20X30	3.66	42	31	26	25	24.50	17.5	15.5	1600
PMR 25X30	5.65	38	31	32	31	37.2	28.7	20.7	1800
PMR 25X35	6.78	38	36	32	31	43.5	33.6	24.0	2000
PMR 30X30	8.45	35	31	38	38	52.5	42.9	34.8	2450
PMR 30X35	10.30	35	36	38	38	63.0	51.3	40.8	2700
PMR 30X40	11.10	35	41	38	38	71.0	58.0	46.0	2950
PMR 30X45	12.70	35	46	38	38	83.5	68.0	54.0	3200
PMR 35X45	17.20	32	49	44	44	120.6	103.0	87.0	4600
PMR 35X50	19.35	32	54	44	44	137.0	116.0	98.0	5200
PMR 35X55	21.50	32	58	44	44	152.0	130.0	109.0	5800
PMR 45X45	30.00	29	55	56	56	195.0	172.0	144.0	11500
PMR 45X50	33.75	29	60	56	56	220.0	193.0	162.0	12200
PMR 45X55	37.50	29	65	56	56	244.0	214.0	180.0	13000



Applications and Capabilities

Rotary Feeder Applications

- Wood Chips
- Sawdust
- Bio-Mass Fuel
- Coal
- Cement
- Petroleum Coke
- Paper
- Charcoal
- Wood Pellets
- Ash
- Plastics
- Lime
- Asphalt
- Paper Pulp

Every Precision Feeder is available with an optional injector tee, mounting stand, check valve, and bottom knife access door custom designed to fit your line size and center lines.

Each Precision Rotary Feeder is accompanied by instructions and safety stickers in the appropriate places. With your regular maintenance and inspection programs, your Precision Rotary Feeder will give you many years of reliable service.

Your Precision Rotary Feeder has an extra thick barrel designed to be rebuilt many times before needing replacement. We can also rebuild your old feeder to "like new" condition, and we offer a trade-in allowance for your used feeder when you replace it with a new Precision Rotary Feeder.



A wide variety of rotary feeder sizes allows you to customize the best feeder for your needs.

"Precision Machine & Manufacturing, Inc., worked with us to specially design a Rotary Feeder for our mobile equipment. Engineered to our specifications, the Rotary Feeder meters a variety of mulches and compost, and is always precise and dependable."

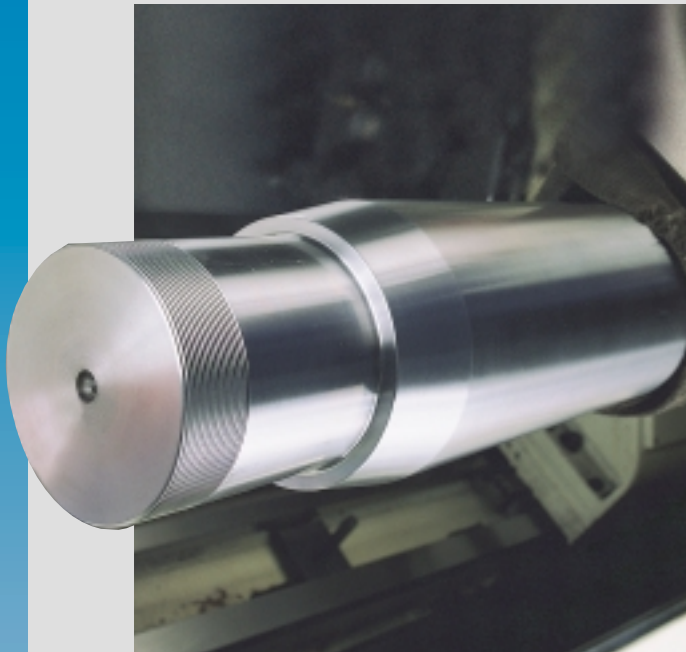
David Looney

*Production Supervisor, Express Blower
A Division of Rexius Forest By-Products, Inc.*



Precision Machine and Manufacturing, Inc.

- *Screw Conveyor and Sectional Flights*
- *Precision Machine Valves*
- *Custom Machined Parts*
- *Welding and Fabrication*



Precision Machine and Manufacturing, Inc., is an innovative and quality-oriented manufacturer of a diverse range of industrial products. Combining machine shop operations, fabrication capabilities and a state-of-the-art CNC department, Precision Machine and Manufacturing, Inc., serves many customers in many different industries.

For more than 20 years we have put our commitment to quality, service and cost-efficiency for our customers as top priority. We have grown to become an industry leader capable of producing any machine component and able to handle any job.



From the agricultural to wood products industries, our manufactured products are known for quality, design, and excellent workmanship. Throughout these industries you will find satisfied customers currently using our Screw Conveyors, Sectional Flights, Precision Machine Valve (PMV) and machining and fabrication services.

Precision Machine and Manufacturing, Inc.'s precise engineering, durable construction and high quality materials ensure that each Precision Rotary Feeder is the best in its class. Call, fax or e-mail us today for more information.



Precision Machine and Manufacturing, Inc.

1290 S. Bertelsen Rd.
Eugene, OR 97402-5700

Phone (541) 484-9841
Fax (541) 484-4094

E-mail: sales@premach.com
engineering@premach.com
Web Site: www.premach.com